



Moticam BTI

Versatile Tablet Microscopy Solution

The Moticam BTI is our most flexible tablet microscopy solution, consisting of a Wi-Fi microscopy imaging camera with a built-in adjustable bracket that allows you to mount your own tablet (up to 10") onto it. The Moticam BTI will help microscope users visualize, edit and share the microscope images, enabling computer-free digital microscopy.



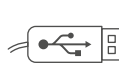
4 MP



1/3"



WI-FI



USB



LAN



7-10"



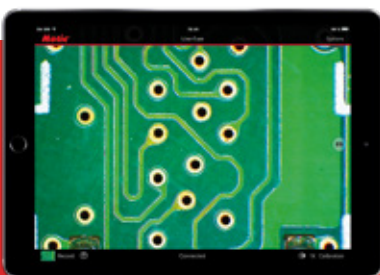
MotiConnect App



Technical Specifications

Name	Moticam BTI
Sensor type	CMOS
Sensor size	1/3"
Imaging area	5.44x3.07mm
Capture resolution	4MP (2560x1440 pixels)
Live display mode through USB	Depending on tablet display resolution
Live display mode through Wi-Fi	1280x720, 1920x1080 pixels (Full HD)
Live display mode through ethernet	1280x720, 1920x1080 pixels (Full HD)
Pixel size	2.0x2.0µm
Scan mode	Progressive
Shutter Mode	Rolling shutter
Data transfer	Wi-Fi (2.4 & 5 GHz), Ethernet
Max. frames per second (fps)	1920x1080 @ 30 fps, 1280x960 @ 30 fps (depending on Wi-Fi strength) (*)
Exposure time	0,03 msec to 0,03 sec
Operating temperature	From 0 to +60 Degrees Celsius non condensing
Max. signal to noise ratio	38.3dB
Dynamic range	64.6dB
Sensitivity	1.9V/Lux-sec (550nm)
Support device	Universal Web browser (HTML5)
Supported OS	Windows 7/8/10, MAC OSX, Android 4,0 or higher, iOS7 or higher
Minimum computer requirements	2GHz dualcore - RAM memory 2GB - Video memory min. 512 MB
Lens mount	C-Mount
Software	MotiConnect App for Windows, Mac, Linux, iOS and Android (Download only)
Functions	Still image and video capture, live and still image measurement, image adjustments, white balance, automatic & manual exposure, individual objective calibration system.
Power supply	12V (External Power supply)
Tablet bracket holder	For tablets from 7" to 10"
Package includes	CS ring adaptor, Motic 4-dot calibration slide, macro calibration card, universal power supply 100V-240V (CE)
Tablet	Tablet not included. Users can use their own tablet and connect through Wi-Fi

(*) Frames per second under optimal lighting conditions and in compliance with computer technical requirements.



MotiConnect App



View, edit, capture and store your images in the blink of an eye, view live images on multiple wireless devices and share your work with anyone in just a few clicks. The MotiConnect App makes data sharing possible in a collaborative environment, encouraging teamwork and collective learning experiences.